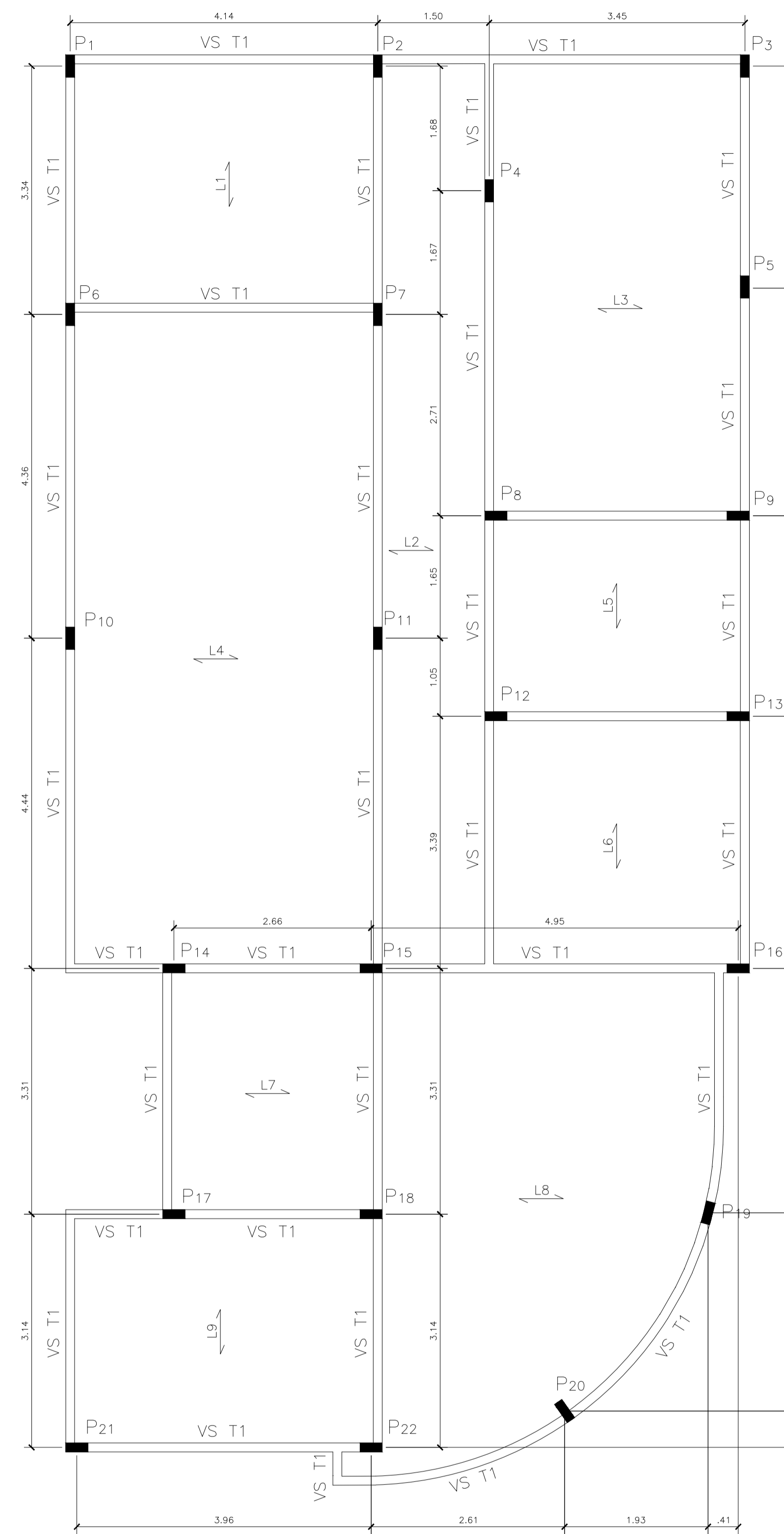
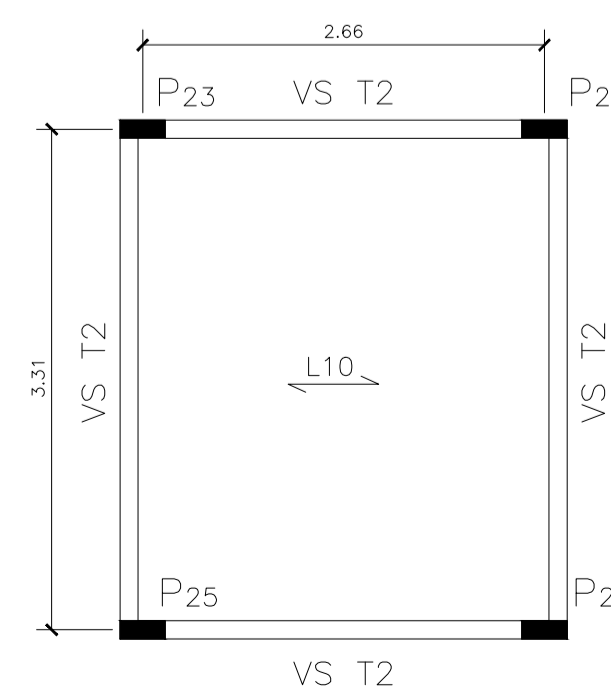


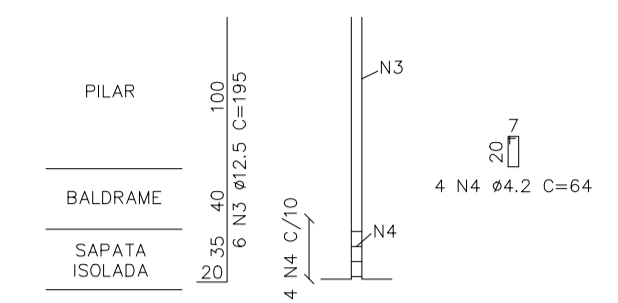
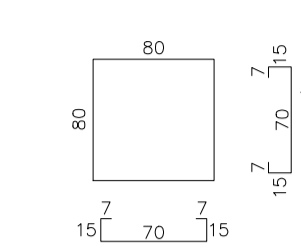
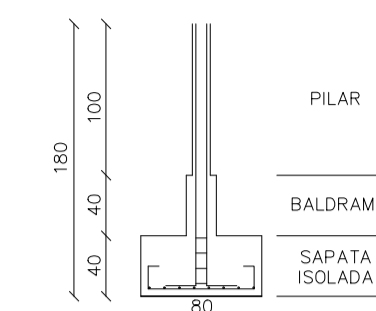
VIGAS BALDRAMES E SAPATAS ISOLADAS
PRÉDIO
ESCALA 1:50



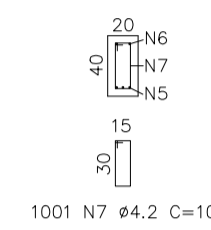
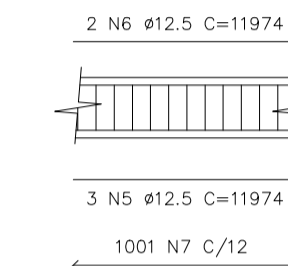
PILARES, LAJES E VIGAS
PRÉDIO
ESCALA 1:50



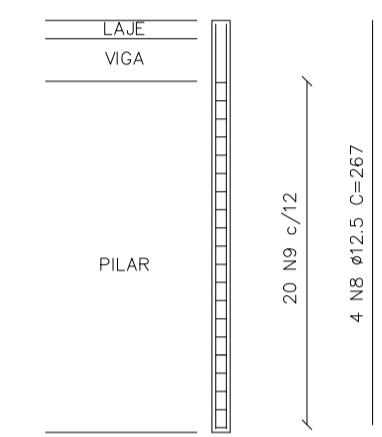
PILARES, LAJE E VIGAS
PRÉDIO
ESCALA 1:50



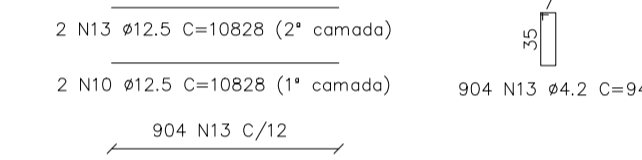
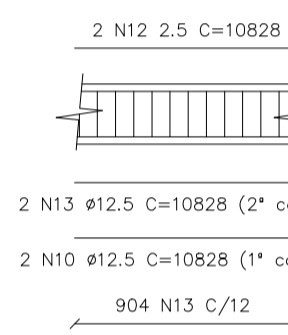
DETALHAMENTO SAPATA ISOLADA (SI 1 a SI 22)
PRÉDIO
ESCALA 1:50



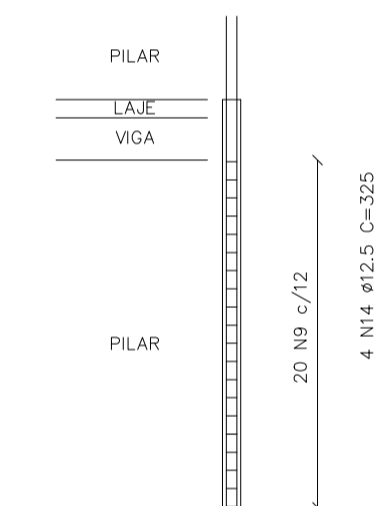
DETALHAMENTO VIGA BALDRAME
PRÉDIO
ESCALA 1:50



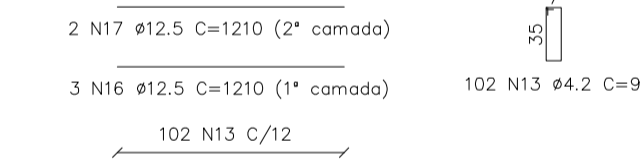
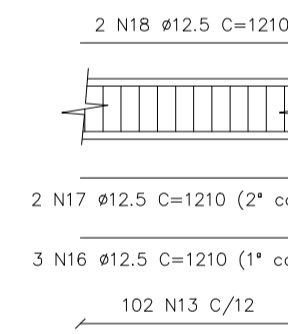
DETALHAMENTO PILARES
(P1 a P13, P16, P19 a P22)
PRÉDIO
ESCALA 1:50



DETALHAMENTO VIGAS TIPO 1
PRÉDIO
ESCALA 1:50



DETALHAMENTO PILARES
(P14 a P15 e P17 a P18)
PRÉDIO
ESCALA 1:50



DETALHAMENTO VIGAS TIPO 2
PRÉDIO
ESCALA 1:50

OBRA: EDIFICAÇÃO CRAS		
DESCRIÇÃO	ESTRUTURAL PRÉDIO	
CLIENTE	PREFEITURA MUNICIPAL DE INHACORÁ/RS	
LOCALIZAÇÃO	RUA MARCOLINO P. DA SILVA - INHACORÁ/RS	
RESPONSÁVEL TÉCNICO	CRISTIANE SONEGO ROLIM	DESENHISTA: CARLA SABRINE POMPEO PLENTZ / PRISCILA SPANEMBERG
DATA:	SETEMBRO/2018	ESCALA: INDICADA FOLHA: ANEXO C
 CRISTIANE SONEGO ROLIM ENGENHEIRA CIVIL - CREA 21283		 CARLA SABRINE POMPEO PLENTZ ENGENHEIRA CIVIL - CREA 21283